



# Welcome to Pack 718 Cub Scouts Join Night!

09/18/2018



Pack 718 Info Session/Join Night



# Agenda

---



▶ Welcome/Intros	5 min	Ryan
▶ What is Pack 718 Scouting like?	10 min	Ryan
▶ Their Own Words	3 min	Jack T & Jack W
▶ Breakout		
▶ Games/Activity for kids	15 min	Joe, +Boy Scouts
▶ Parent discussion & Q&A	15 min	Ryan, Sunny
▶ Re-join and Assemble Dens	10/15 min	Ryan/All
▶ Lions – Den # TBD	TBD	
▶ Tigers – Den 9	Joe	
▶ Wolf – Den 8	Sunny/Anoop	
▶ Bear – Den 7 & 4	ErikM	
▶ Webelos I – Den 1	TBD	
▶ Webelos II – Den 3	Linda	
▶ Collect payments & registrations	Paritosh, Lisa	



# Pack 718 Leadership

---



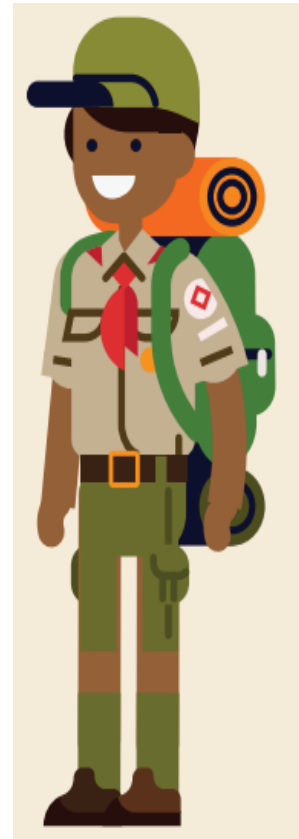
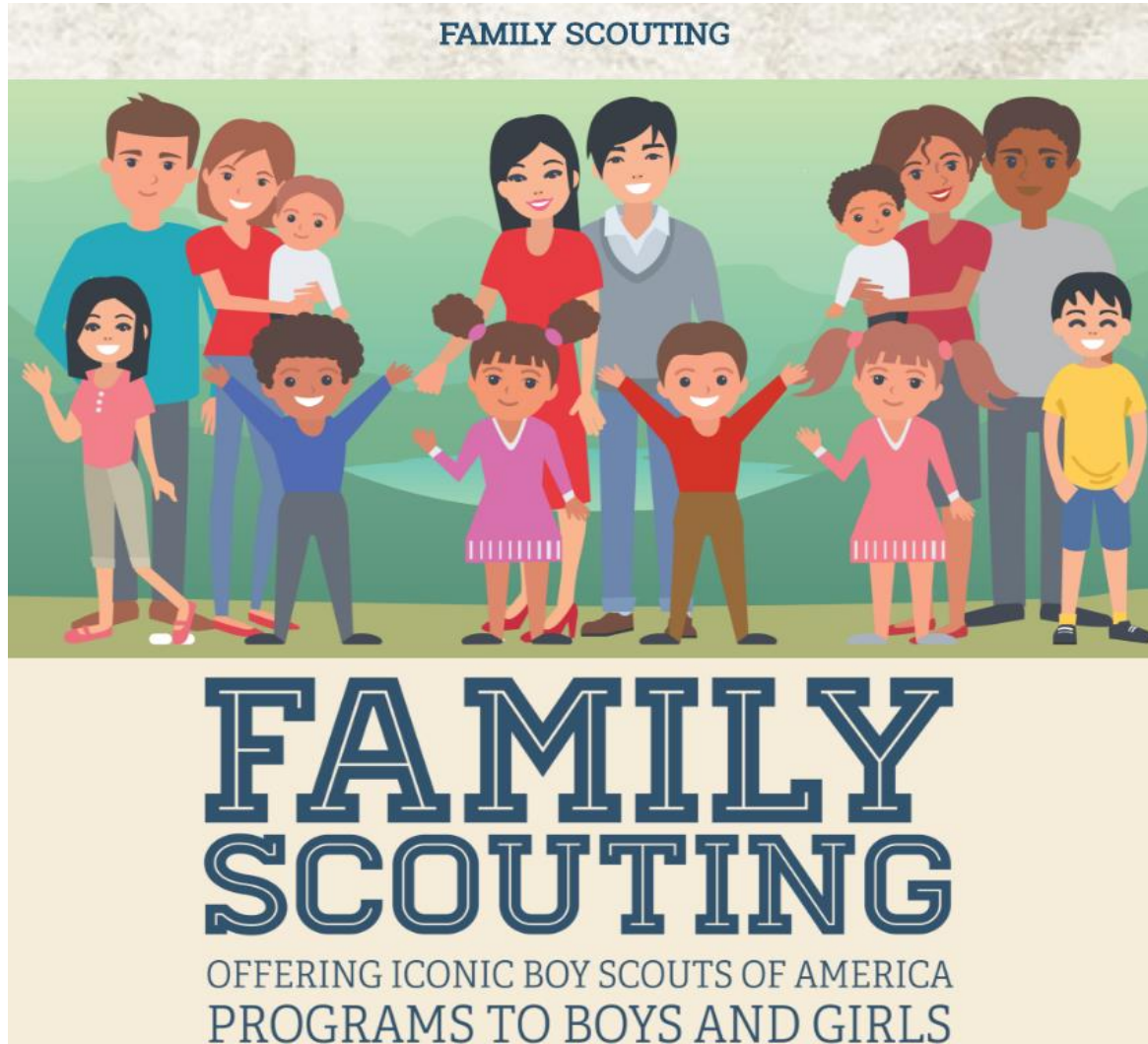
- Eric Kusse – Committee Chair
- Ryan Weese – Cubmaster
- Paritosh Saxena – Treasurer
- Lisa Yan, Melanie Fallis – Adv & Awards Coordinators
- Den Leaders
  - Linda Trombley – Webelos II
  - Cory & Jen Johnson – Webelos
  - Suren Thungathurti, Erik McKee – Bear
  - Manan (Sunny) Grover - Wolf
  - Joe Strasser – Tiger



# Family Scouting



*Pack 718 is forming new dens for girls to join our Scouting program.*



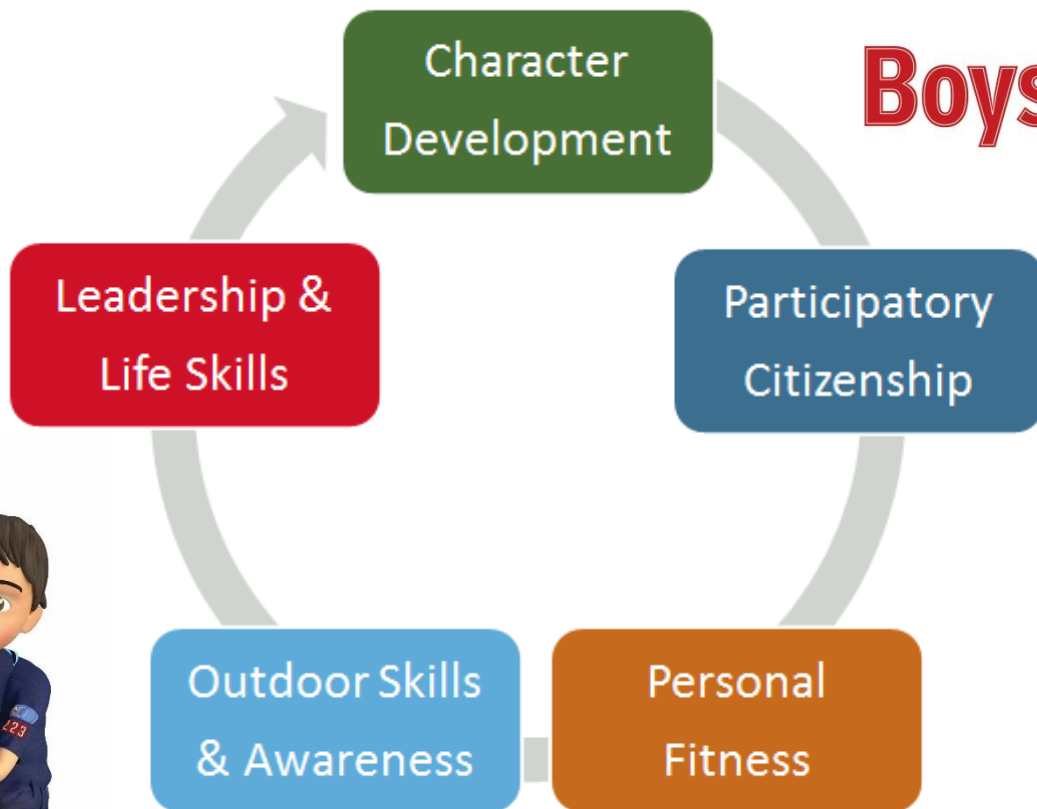


# What is Scouting?



*Scout Law: A Scout is Trustworthy, Loyal, Helpful, Friendly, Courteous, Kind, Obedient, Cheerful, Thrifty, Brave, Clean and Reverent*

**Prepared. For Life.®**



**Boys' Life®**



**DO YOUR BEST!**





# Fun with a Purpose!







Summer Camps!





# Their Own Words

---

Jack Trombley

Jack Weese

Webelos II -- Den 3



# And Now....

---



# Kids...to the Gym!



# Where will my child fit in the Pack?

**BOBCAT**

**LION**

**TIGER**

**WOLF**

**BEAR**

**WEBELOS**  
Arrow of  
Light



**Start**

**Kinder-  
gartners**

**1st  
Grade**

**2nd  
Grade**

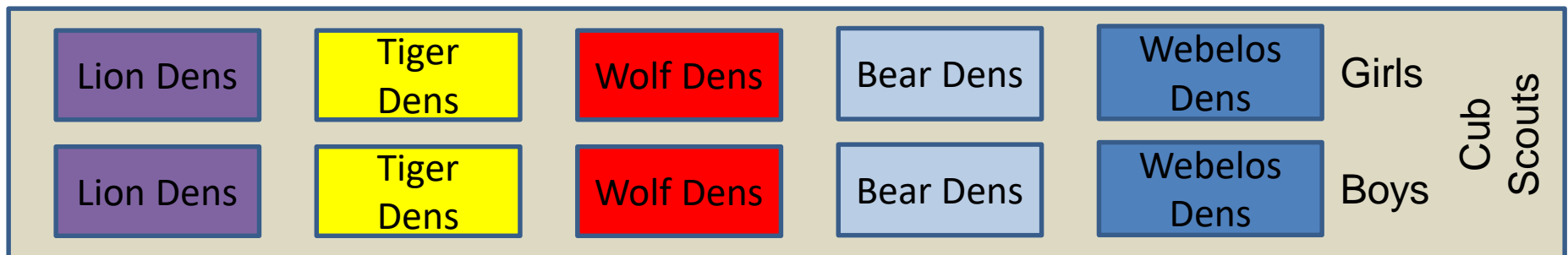
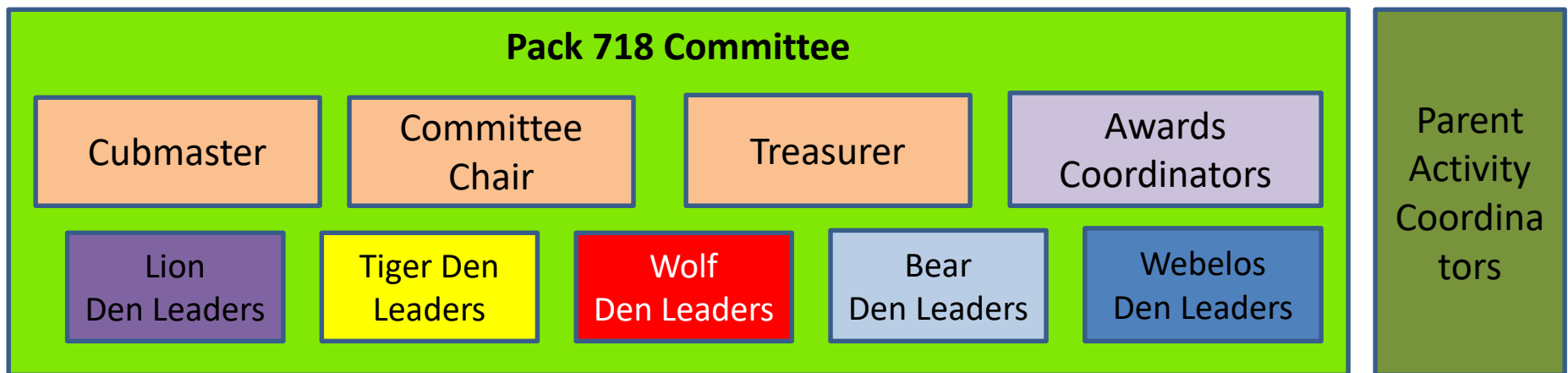
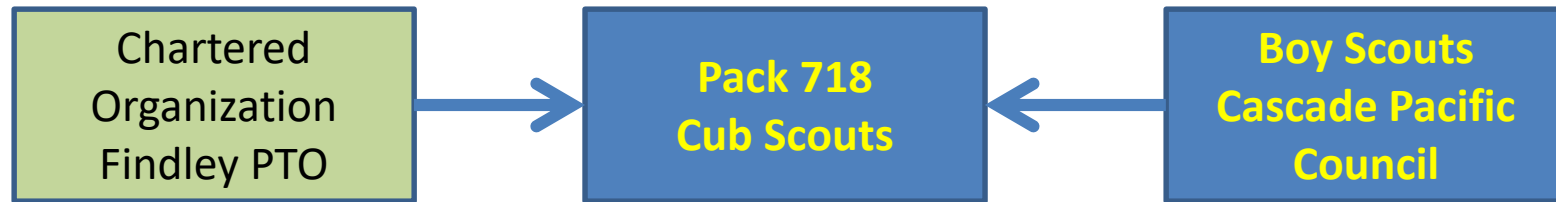
**3rd  
Grade**



**4th & 5th  
Grade**



# How does the Pack run?





# What is the time commitment?

---



- Pack meeting
  - Once a month => ~1 hr in Findley Cafeteria
  - 3<sup>rd</sup> Tuesday of the month (7-8pm)
  - Depending on agenda, they might run a little longer
  - A parent should attend (e.g. upcoming event announcements)
- Den meetings
  - Once or twice per month => ~1 hr
  - Typically 1 mtg/month for starting ranks, 1-2 for higher ranks.
  - Timeslot and mtg place selected by the den parents
  - Parents expected to contribute by coordinating 1-2 activities/lessons for the den during the year.
- Den outing “Go-See-It” or Pack activity
  - Den/Pack outings typically 1 or 2 per month
  - 1-3hrs depending on the activity





# Den and Pack Activities

---

- Examples of Den Field Trips
  - Local Hikes, Fire stations, Police Departments, Sporting Games, OMSI, TV Station, Historical Places, Museums
- Examples of Pack Activities
  - Pack-Wide Events
    - Pinewood Derby, Pack Summer Picnic, Blue and Gold Banquet, Rocket Launch, Pack Outings, Special Guests!
  - Service Projects
    - Scouting for Food – canned food drive
    - Salvation Army Bell Ringing – charity collection
    - Findley fall and spring beautification – grounds clean up
- Summer Camps
  - Day Camp: 1<sup>st</sup> & 2<sup>nd</sup> grade
    - Camp Ireland Day camp (5 days) – Hillsboro
  - Overnight Summer Camps: 2nd-4th grade
    - Butte Creek Ranch overnight camp (3 nights) – Scotts Mills near Mollala
    - Camp Clark overnight camp (5 nights) - On the coast near Tillamook



# Scouting Adventures



Backyard Jungle



Games Tigers Play



My Family's Duty to God



Team Tiger



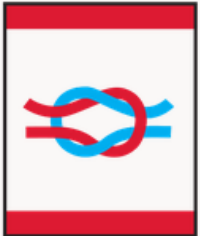
Tiger Bites



Tigers in the Wild



Call of the Wild



Council Fire



Duty to God Footsteps



Howling at the Moon



Paws on the Path



Running With the Pack



Bear Claws



Bear Necessities



Fellowship and Duty to God



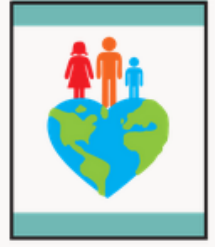
Fur, Feathers, and Ferns



Grin and Bear It



Paws for Action



Cast Iron Chef



Duty to God and You



First Responder



Stronger, Faster, Higher



Webelos Walkabout



Building a Better World



Camper



Duty to God in Action



Scouting Adventure





# What does it cost?

---



- Things you pay for
  - Registration: \$33+\$12 (includes Boy's Life subscription, Pack covers annual renewals)
  - Uniform: ~\$35-60 (One time, buy big 😊)
  - Rank Handbook, Scarf, Slide: \$13 (Pack covers the annual cost)
  - Camp fees of \$120-\$300 for scouts per year + adult fee
  - FOS Campaign donation – Support scouting in the Portland area
  - Miscellaneous outing/activity participation fees
- The Pack covers the cost of awards, achievements and some pack Scouting events
- One Pack fundraiser for the year – covers the annual pack costs ~\$120 per scout
  - Holiday Wreath sales – more details in October
- Pack will provide a handbook, scarf, slide for anyone registering tonight!



# What is the uniform? (Class A)



## Cub Scout Uniform

- Blue Cub Scout Shirt (required)
  - World Crest Patch
  - American Flag Patch – sold on shirt
  - Den Number Strip
  - Council Patch
  - District Patch
  - Unit (Pack) Numbers
- Neckerchief Scarf (required) - matching rank (Tiger-orange, Wolf-yellow, Bear-blue, Webelos)
- Slide matching rank (required)
- Hat matching rank (optional)
- Belt (for hanging achievements)



### Patch Info:

- Pack = 718
- Den = # TBD
- District = Sunset Trail
- Council = Cascade Pacific



Pack 718 -



### “Badge Magic”

- is an adhesive to attach badges easily without having to sew. Highly recommended!



- | Pack 718 - Year at a Glance 2018-2019                    |            | Pack 718 - Year at a Glance 2018-2019 |                     |                       |                          |   |                    |   |                        |                   |   |  |                          |
|--|------------|---------------------------------------|---------------------|-----------------------|--------------------------|---|--------------------|---|------------------------|-------------------|---|--|--------------------------|
| Pack 718 - Year at a Glance 2018-2019                    |            | Aug 2018                              | Sept 2018           | Oct 2018              | Nov 2018                 | Dec 2018  | Jan 2019           | Feb 2019  | Mar 2019               | Apr 2019          | May 2019                                    | Jun 2019                                 | July 2019                |
| Meeting Dates - 2nd Tues of Month - 7:00pm               |            |                                       |                     | Tue 10/9              | 11/###/2018              | Tue 12/18   | Tue 1/8            | Tue 2/19  | Tue 3/19               | Tue 4/16          | Tue 5/21                                    | None                                     |                          |
| Committee Mtg - Last or First Tue - 7:00pm               |            | Thu 8/23                              | Tue 9/4             | Tue 9/25              | Tue 10/30                | Tue 12/4  | Wed 1/2            | Tue 1/29  | 2/26/19 or 3/5/19      | Tue 4/2           | Tue 4/30                                    | Tue 5/28                                 |                          |
| Setup  |            |                                       |                     | Den 3                 | Den 1                    | Den 4   | Den 7              | Den 1   | Den 8                  | Den 9             | Den # (Tigers)                              |  |                          |
| Cleanup  |            |                                       |                     | All                   | All                      | All   | All                | All   | All                    | All               | All   |  |                          |
| Open/Close Flag  |            |                                       |                     | 3                     | 1                        | 4   | 7                  | 1   | 8                      | 9                 | #   |  |                          |
| Skit   |            |                                       |                     | 3                     | 4                        | 7   | 1                  | 3   | 9                      | #                 | 8   |  |                          |
| Song   |            |                                       |                     | 1                     | 3                        | 8   | 4                  | 3   | #                      | 7                 | 9   |  |                          |
| Advancement  |            |                                       |                     | Scout Law             | Bobcat/Ranks             | Photo/Guest                                       | FOS/Guest          | AOL/Cross Over  |                        |                   | Ranks                                       | Picnic Plan                              |                          |
| Special Event  |            |                                       |                     | Challenge             |                          |   |                    | Blue & Gold   | Challenge/Guest        | Chariot Races     | Awards                                      |  |                          |
| District Round Table Meeting - 2nd Thurs - 7:00pm        |            | Thu 8/9                               | Thu 9/13            | Thu 10/11             | Thu 11/8                 | Thu 12/13   | Thu 1/10           | Thu 2/14  | Thu 3/14               | Thu 4/11          | Thu 5/9                                     | Thu 6/13                                 | Thu 7/11                 |
| ACTIVITIES   | Den        |                                       |                     |                       |                          |   |                    |   |                        |                   |   |  |                          |
| Weekdays   |            |                                       | Mon 9/3 - Labor Day | Sun 10/27-31 - Diwali | Thu 11/22 - Thanksgiving | Tue 12/25 - Christmas, Mon 12/24-1/5 Winter Break | Mon 1/21 - MLK Day | Thu 2/14 - Valentine's Day, Tue 2/5 CNY, Mon 2/18 - Pres. Day | Spring Break 3/25-3/29 | Sun 4/21 - Easter | Sun 5/12 (Mom's Day), Mon 5/27 Memorial Day | Sun 6/16 Father's Day, Fri 6/14 Last Day | Thu 7/4 Independence Day |
| Committee - Kickoff Mtg                                  | Committee  | Thu 8/23                              |                     |                       |                          |   |                    |   |                        |                   |   |  |                          |
| Scout Packet Pick-up Day (7:30-11:30am)                  | Recruiting | Wed 8/22                              |                     |                       |                          |   |                    |   |                        |                   |   |  |                          |
| Scout Packet to school night 3rd-5th grades (6:30-8pm)   | Recruiting | Wed 8/29                              |                     |                       |                          |   |                    |   |                        |                   |   |  |                          |
| Scout Packet to school night 1st & 2nd grades (6:30-8pm) | Recruiting | Thu 8/30                              |                     |                       |                          |   |                    |   |                        |                   |   |  |                          |
| Committee - Join Night Planning                          | Committee  |                                       | Tue 9/4             |                       |                          |   |                    |   |                        |                   |   |  |                          |
| Scout Join Night   | Committee  |                                       | Tue 9/18            |                       |                          |   |                    |   |                        |                   |   |  |                          |
| Committee - Program Year Planning                        | Committee  |                                       | Tue 9/25            |                       |                          |   |                    |   |                        |                   |   |  |                          |
| Den Leader Orientation                                   | Eric       |                                       |                     | Tue 10/2              |                          |   |                    |   |                        |                   |   |  |                          |
| Scout Fall Festival - Spooky House Service Proj          | All        |                                       |                     | Sat 10/27             |                          |   |                    |   |                        |                   |   |  |                          |
| Scout Sale   | All        |                                       |                     | start 10/9            | end 11/3                 |   |                    |   |                        |                   |   |  |                          |
| Findley Beautification - Service Project                 | All        |                                       |                     |                       | TBD                      |   |                    |   |                        |                   |   |  |                          |
| Scouts' Day Parade                                       | All        |                                       |                     |                       |                          | Sat 12/1  |                    |   |                        |                   |   |  |                          |
| Scouting for Food  | All        |                                       |                     |                       |                          | Sat 12/15   |                    |   |                        |                   |   |  |                          |
| Scout Army Bell Ringing                                  | All        |                                       |                     |                       |                          |   |                    |   |                        |                   |   |  |                          |
| Scout Pinewood Derby                                     | All        |                                       |                     |                       |                          |   | Tue 1/8            |   |                        |                   |   |  |                          |
| Scout Pinewood Derby - Check In Night                    | All        |                                       |                     |                       |                          |   | Fri 1/25           |   |                        |                   |   |  |                          |
| Scout Pinewood Derby - Race Day 9am-1pm                  | All        |                                       |                     |                       |                          |   | Sat 1/26           |   |                        |                   |   |  |                          |
| Scout & Gold Celebration                                 | All        |                                       |                     |                       |                          |   |                    | Tue 2/12  |                        |                   |   |  |                          |
| Scout Outing - (Sporting event, Visit)                   | All        |                                       |                     |                       | TBD                      |   |                    |   |                        | TBD               |   |  |                          |
| Scout Fun Event  | All        |                                       |                     |                       |                          |   |                    |   |                        | TBD               |   |  |                          |
| Scout Overnighter  | All        |                                       |                     |                       |                          |   |                    |   | TBD                    |                   |   |  |                          |
| Scout &R Scouts Day                                      | All        |                                       |                     |                       |                          |   |                    |   |                        | TBD               |   |  |                          |
| Scout sponsored Movie Night                              | All        |                                       |                     |                       |                          |   |                    |   |                        | Fri 4/26          |   |  |                          |
| Scout Findley Beautification - Service Project           | All        |                                       |                     |                       |                          |   |                    |   |                        |                   | Sat 5/4                                     |  |                          |
| Scout off the TV/Screen Free week                        | All        |                                       |                     |                       |                          |   |                    |   |                        |                   |   |  |                          |





# Questions?

---



More information available at:

<http://pack718.net/>

Why Join Scouts?

<https://beascout.scouting.org/>

<https://cubscouts.org/>

Portland area Scouting Council site:

<https://www.cpcbsa.org/>



# Cub Scout Pack 718

Keeping up with the Scouts of Pack 718

 Search


## HOME



outings.

Cub Scout Pack 718 is part of the [Sunset Trail District](#) which is in the [Cascades Pacific Council](#) of the [Boy Scouts of America](#). Join our Pack & join the fun! For information about joining [click here](#).

We're the Cub Scout Pack for [Findley Elementary](#). We have a fantastic group of kids & parents who participate in scouting activities every month. Cub Scouts offers a unique experience that's hard to find elsewhere. Learn new skills, build character, & practice leadership through age appropriate hands-on activities. Get to know more about the people & places in your community through field trips & special

### UPCOMING EVENTS

#### [Committee – Program Yearly Planning](#)

September 23 @ 9:00 am - 12:00 pm

#### [Pack Committee Oct 2017](#)

October 4 @ 7:00 am - 8:00 pm

#### [Wreath Sale Pack Fundraiser](#)

October 10 - November 3

#### [Pack Meeting Oct 2017](#)

October 10 @ 7:00 pm - 8:00 pm



# And Now....

---



# Bring the kids back in!



# Before the First Pack Meeting

---



1. Meet up as a Den prior to the first Pack meeting
  - You will receive an email connecting you with your new den leader and den parents. Setup a first mtg time.
2. Review the Bobcat requirements
3. Purchase uniforms & insignia (Scouts wear at pack mtgs)
  - Nor'West Scout Shop (Scout operated)
    - **Address:** 2145 SW Naito Pkwy, Portland, OR 97201
    - **Phone:**(503) 226-3423
    - **Hours:** Mon-Fri 9am-6pm, Sat 10am-4pm, Sun - Closed
  - Official retail site of the BSA
    - <http://www.scoutstuff.org/>
  - Hillsboro Shop that also sells BSA merchandise
    - LaHaie's Letterjackets and Boy Scout Supplies
    - 277 E Main St, Hillsboro, OR 97123
    - (503) 648-2341
    - <http://www.lahaies.com/scouts.htm>





# Tonight's Assignment List

---

1. Fill out the Youth application
  - Gather at tables in the back by grade
2. Check for \$45 made out to Pack 718 Cub Scouts
3. Fill in Den Roster info sheet
  - Correct any contact info information for accuracy
4. Form up Dens of ~8 boys or girls
5. Identify parents who are interested in coordinating the group as den leaders
6. Turn in fee and forms at registration table
7. Pick up your new Cub Scout Handbook!



We are a pack

This form is read by machine. Please print the numbers and letters as shown on the sample application.

# YOUTH MEMBERSHIP

Unit type:  
(Fill in the circle.)

Cub Scout  
Pack

Boy Scout  
Troop

Varsity Scout  
Team

Venturing  
Crew

Sea Scout  
Ship

Lone Cub Scout  
Lone Boy Scout

Unit No.:

718

For pack registration select one:

Tiger Cub

Cub Scout

Webelos Scout

Arrow of Light earned

Mark here if new to Scouting.

Former Scout

Former Venturer

Former Sea Scout

Select Rank

If applicant has an unexpired membership certificate, registration may be accomplished in this unit by paying \$1 for processing the transfer. Mark and attach certificate. It will be returned by the council.

Transfer application

Transfer from council number:

Unit type:

Pack

Troop

Team

Crew

Ship

Unit No.:

Enter membership number from unexpired certificate:

Name and address information (Please print one letter in each space—press hard, you are making a copy.)

First name (No initials or nicknames)

Middle name

Last name

Suffix

Country Mailing address

City

State

Zip code

Home phone

Date of birth (mm/dd/yyyy)

Grade

Ethnic background:

Fill this circle in

Black/African American

Native American

Alaska Native

Asian

Caucasian/White

Hispanic/Latino

Pacific Islander

Other

Gender:

Male

Female

Boys' Life  
subscription

Parent/guardian information

Mark here if address is same as above.

I agree to be an active ScoutParent.

Mark here if you are the Tiger Cub adult partner.

Mark here if the adult partner/ScoutParent is not living at the same address; complete and attach an adult application.

Select relationship:

Parent

Guardian

Grandparent

Other (specify)

First name (No initials or nicknames)

Middle name

Last name

Suffix

Country Mailing address

City

State

Zip code

Home phone

Date of birth (mm/dd/yyyy)

Occupation

Employer

Gender:

M

F

Business phone

Ext.

Previous Scouting experience

Remember to sign!

Cell phone

Parent/guardian e-mail address

@

I have read the attached information sheet and approve the application  
(signature of parent/guardian required if applicant is under 18 years of age).

Signature of unit leader (or designee)

Date

Signature of parent/guardian

2002

Registration fee \$

Boys' Life fee \$

Signature of Venturer

LOCAL COUNCIL COPY

Retain on file for three years. 524-406A



# Be Part of the Fun!

pack718.net

## Join Night - Tues Sept 18<sup>th</sup> 2018

### 7pm @ St. Pius X Church

