



# Joining Cub Scouts Pack 718 Findley







# Fun with a Purpose!





# What is Cub Scouting?



*Scout Law: A Scout is Trustworthy, Loyal, Helpful, Friendly, Courteous, Kind, Obedient, Cheerful, Thrifty, Brave, Clean and Reverent*

**Prepared. For Life.®**



**DO YOUR BEST!**

# About Pack 718

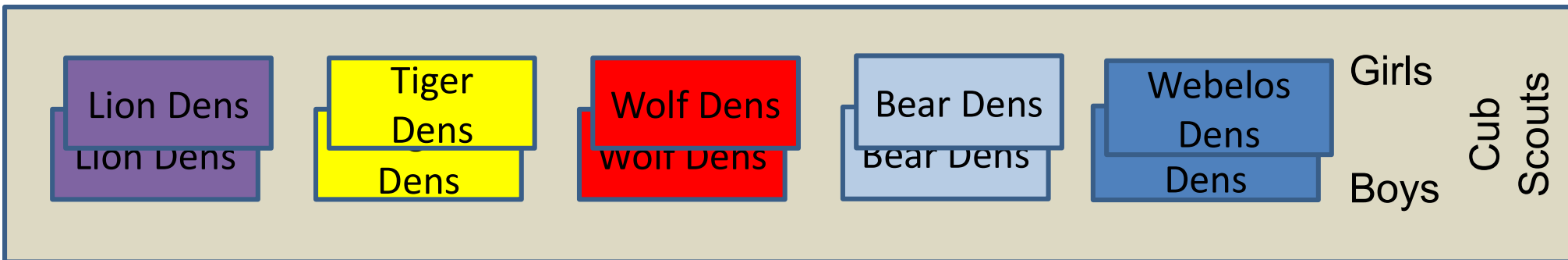
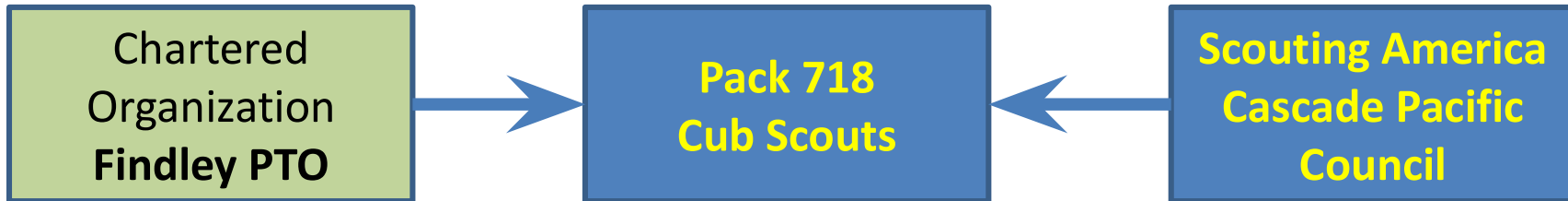
---



## Pack 718 is:

- A parent-led, volunteer run, organization that wants to help our kids grow and learn in a safe and fun environment
- Part of the National Program: ~~Scouts BSA~~ Scouting America
- Chartered under the Findley Elementary PTO
- Open to Boys and Girls ages K-5
- Pack size is historically, around 40 kids
- Pack divided into Dens of 6-8 kids by grade-level

# How does the Pack run?



# Pack 718 Leadership

---



- **Charter Organization Representative:** Anuja Bansal
- **Committee Chair:** Steve Smith
- **Cubmaster:** Bill Dieter
- **Treasurer:** Sachin Vaya
- **Adv & Awards Coordinators:** Manish Jain
- **Digital Coordinator:** Nikhil Penmetsa
- **Den Leaders**
  - Arrow of Light (5th Grade): Poulami Mitra
  - Webelos (4th Grade): Sara Schmitz
  - Bear (3rd Grade): Anuja Bansal
  - Wolf (2nd Grade): *Leader opportunity open!*
  - Tiger (1st Grade): Andrew Lamkin
  - Lions (Kindergarten): *Leader opportunity open!*
- **Committee Members:** interested parents – *Leader opportunity open!*

# Where will my child fit in the Pack?

**LION**

**TIGER**

**WOLF**

**BEAR**

**Webelos**

**Arrow of Light**



**Kinder  
garten**

**1st  
Grade**

**2nd  
Grade**

**3rd  
Grade**

**4th  
Grade**

**5th  
Grade**

# What is the time commitment?

---



- Den meetings
  - The most important parts of the Cub Scout program happen here
  - Typically 1 mtg/month for Kinder & 1st grade, 1-2 for higher ranks => ~1 hr
  - Timeslot and mtg place selected by the den parents
- Pack meeting
  - Once a month => ~1 hr in Findley Cafeteria
  - 2<sup>nd</sup> or 3<sup>rd</sup> Tuesday of the month (7 PM - 8 PM)
  - Depending on agenda, they might run a little longer
  - A parent is expected to attend (e.g. upcoming event announcements)
- Den outings or Pack activity
  - Den/Pack outings typically ~1 per month
  - 1-3 hrs depending on the activity
  - Findley Fall Cleanup, Pinewood Derby, Scouting For Food, Snow Tubing
- Parental Involvement
  - Our pack is run through the wonderful work of volunteers
  - Parents **required** to contribute by coordinating 1-2 activities/lessons for the den or pack during the year
  - Everyone has a day job!





# Den and Pack Activities

---

- Examples of Den Field Trips
  - Local Hikes, Fire stations, Police Departments, Sporting Games, OMSI, TV Station, Historical Places, Museums, Horsemanship
- Examples of Pack Activities
  - Pack-Wide Events
    - Pinewood Derby, Blue and Gold Banquet, Rocket Launch
  - Service Projects
    - Scouting for Food – canned food drive
    - Findley beautification – grounds clean up
- Summer Camps
  - Overnight Summer Camps: 1st-4th grade
    - Butte Creek Ranch overnight camp (3 nights) – Scotts Mills near Molalla
    - Webelos BASE Camp overnight camp (6 nights) - Near Mt. Hood

# Important Pack Events for 2024



September	Joining Night (You Are Here)
October	Getting to Know You/Wreath Sales
November	Guest Speaker
December	Findley Fall Cleanup
January	Pinewood Derby
February	Blue & Gold Celebration/Crossover
March	Scouting for Food, Spring Camping
April	Chariot Races
May	Rank Advancement, Lil' Buckaroos Horsemanship
June	Rocket Launch
July/August	Summer Camp

# What does it cost?



## Things you pay for

Dues – annual fee <i>Pack covers future years</i>	\$120 first year <i>Pack covers subsequent years</i>	\$85 (National, 2024) \$20 (Council, 2023) \$15 (Scout Life Magazine)
Uniform	\$85-95	One time, buy big

## Additional Expenses

Rank handbook, scarf, slide	\$45/yr	Pack covers annual costs
Awards/Achievements, and some events		Pack covers annual costs
Summer Camp	\$334/scout + \$112/adult	Family covers, +Adult fee
Misc outings/activity fees (Pinewood Derby Car, Model Rocket, ...)	Varies with activity, \$10 to \$50	
Camp4All		Support council camps

Pack is primarily funded through 1 fund raising activity (Wreath sales) and corporate volunteer hour matching (Intel, Nike, Columbia, Nvidia, ...)



# Cub Scout Uniforms (Class A)



## Cub Scout Uniform

- Blue Cub Scout Shirt (required)
  - World Crest Patch
  - American Flag Patch
  - Den Number Strip
  - Cascade Pacific Council Patch
  - Pacific Trail District Patch
  - Unit (Pack) Numbers
- Belt (for some achievements)
- Hat matching rank (optional)
  
- Pack provides:
  - Neckerchief Scarf (required) - matching rank (Tiger-orange, Wolf-yellow, Bear-blue, Webelos)
  - Slide matching rank (required)



### Patch Info:

- Pack = 718
- Den = # TBD
- District = Pacific Trail
- Council = Cascade Pacific



Pack 718 -



### “Badge Magic”

- is an adhesive to attach badges easily without having to sew.



# Before the First Pack Meeting

---

1. Meet up as a Den prior to the first Pack meeting
  - You will receive an email connecting you with your new den leader and den parents. Setup a first mtg time.
2. Purchase uniforms & insignia (Scouts wear at pack mtgs)
  - Nor'West Scout Shop (Scout operated)
    - Address:** 2145 SW Naito Pkwy, Portland, OR 97201
    - Phone:** (503) 226-3423
    - Hours:** Mon-Fri 9am-6pm, Sat 10am-4pm, Sun - Closed
    - URL:** <https://cpcbsa.org/about/scout-shop/>
  - Official retail site of the BSA
    - <http://www.scoutstuff.org/>
  - Hillsboro Shop that also sells BSA merchandise
    - LaHaie's Letterjackets and Boy Scout Supplies
    - Address:** 277 E Main St, Hillsboro, OR 97123
    - Phone:** (503) 648-2341
    - URL:** <http://www.lahaies.com/scouts.htm>



# Ready to sign up?

---

1. Fill out the Youth application
  - <https://beascout.scouting.org/>
2. Sign up to be part of Adult Leadership (same as above)
3. Pay any fees online



## More information:

- Pack 718: <http://pack718.com/>
- Why Join Scouts? <https://cubscouts.org/>
- Cascade Pacific Council: <https://www.cpcbsa.org/>